

Dropped Object During Backloading

Description of Incident (November 12, 2024)

During backloading operations from a production facility to a supply vessel, an open-top basket was safely landed on the vessel deck. Due to the inability to safely secure (lash) the basket to the vessel deck in the location, the Crane Operator was requested to reposition the basket further aft to allow proper lashing. During repositioning of the basket, one corner of the basket caught on a manifold opening in the vessel's crash rail. The vessel moved in a downward motion resulting in the hoist line, pennant line, and associated rigging on the basket to become taught and a failure of one of the four legs (of four-legged bridle). The basket tipped causing the contents of the basket to come to rest on the vessel deck.

Weather conditions at the time of backloading operations were within limits of vessel and crane parameters. The "Clear Deck Policy" was enforced and the nearest workers were approximately 6 metres away with clear escape routes. The Automatic Overload Protection System (AOPS) on the crane was activated as designed. Inspection and function tests of the crane confirmed no damage occurred.

What Went Wrong

Root Causes

- Equipment Design – Door/manifold openings in vessel crash rails not visible from platform/crane.
- Equipment/Work Environment – Deck lashing locations limit areas where deck cargo can be secured creating potential for handling cargo multiple times.

Corrective Actions & Recommendations

The following corrective actions were recommended and are being implemented:

- Visually identify openings in vessel crash rails with markings on top of crash rail and/or vessel deck.
- Determine if additional lashings are available to eliminate/lessen requirements to reposition cargo on vessel deck.

The operator suggests readers should consider the following learning questions in error prone situations:

- Is the workplace, equipment or environment set-up in a manner that could make the task hard to get right?
- Have you considered all hazards in the Job Safety Analysis?
- How can your work environment or procedure be improved to make the task easier to get right, harder to get wrong?

Applicable Lifesaving Rule

There is no lifesaving rule applicable to this incident.

Posted on May 1, 2025.

[Read more](#) Atlantic Canada Offshore Safety Alerts.

Related Images



Figure 1: Contents of Basket Secured on Vessel Deck

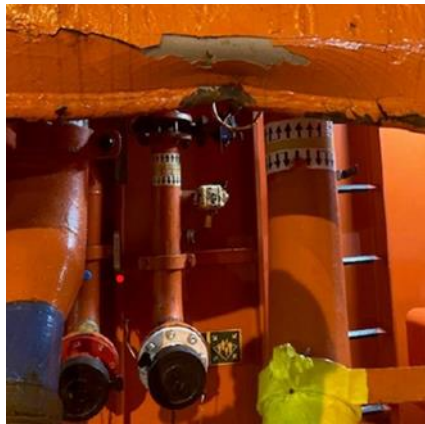


Figure 2: Damaged Manifold Opening